

THIS DRAWING AND SPECIFICATIONS ARE THE PROPERTY OF MDL INC. AND SHALL NOT BE REPRODUCED OR COPIED OR USED IN WHOLE OR IN PART AS THE BASIS FOR THE MANUFACTURE OR SALE OF ITEMS WITHOUT WRITTEN PERMISSION.

INTERPRET DRAWING IN ACCORDANCE WITH ANSI Y14.5M-1982

REVISIONS				
ZONE	LTR	DESCRIPTION	DATE	APPROVED
A		REVISED PER ECN # 15927	12-5-01	FWC
B		REVISED PER ECN #16321	8-10-04	FWC

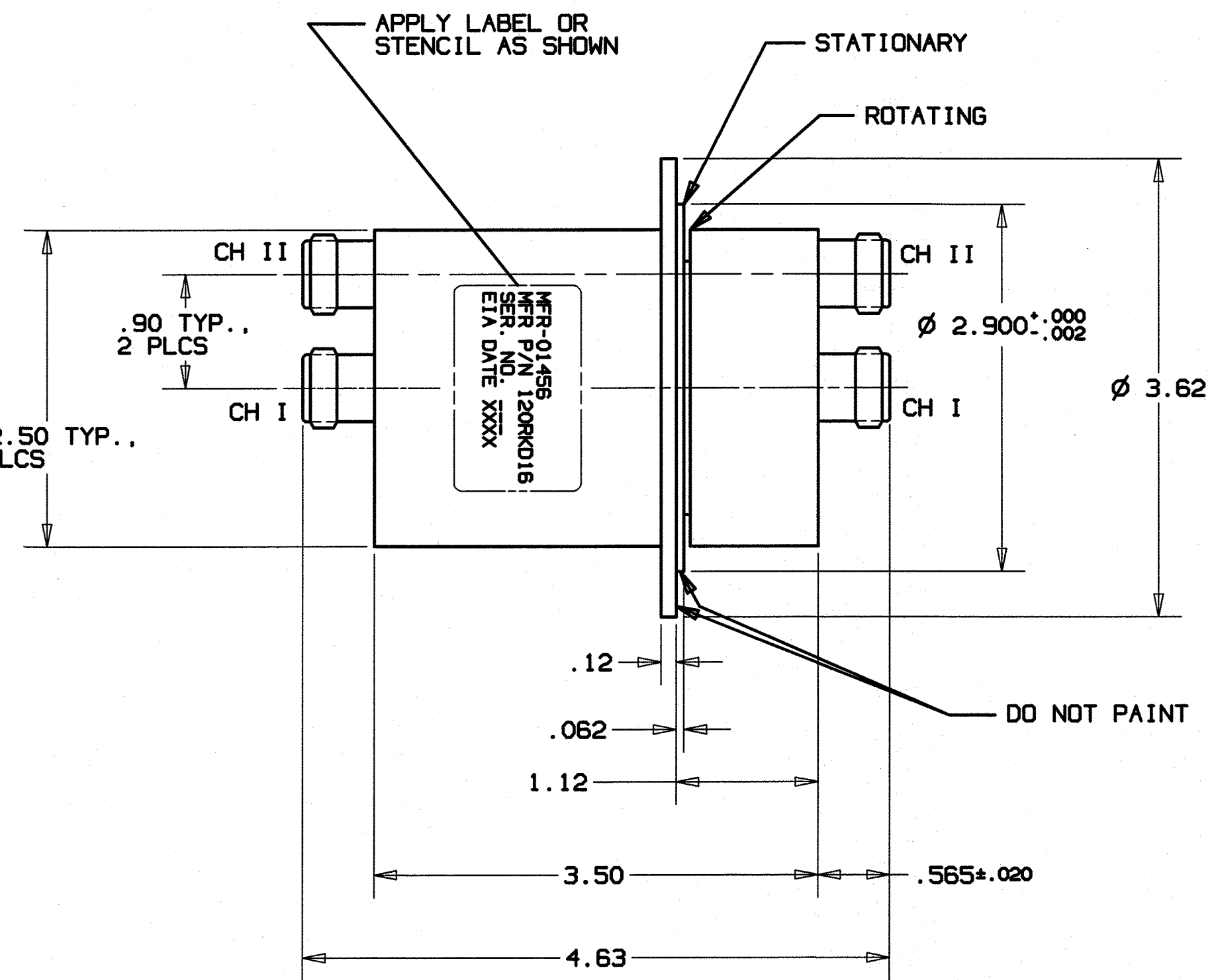
SPECIFICATIONS:

	CH I	CH II
1.0 ELECTRICAL		
FREQUENCY	DC-12.4 GHz	DC-4.0 GHz
VSWR/MAX	1.35	1.25 DC-1.5 GHz 1.6 1.5 - 4.0 GHz
WOW/MAX	1.02	1.05 DC-1.5 GHz 1.10 1.5 - 4.0 GHz
IL/MAX	0.5 dB	0.2 dB DC-1.5 GHz 0.5 dB 1.5 - 4.0 GHz
PEAK POWER	250 WATTS	250 WATTS
AVE POWER	50 WATTS	50 WATTS

2.0 MECHANICAL

MATERIAL	ALUMINUM
PRESSURE	NONE
START TORQUE	8 OZ-IN MAX
ROT SPEED	100 RPM
WEIGHT	26 OZ APPROX
FINISH	IRIDITE ALL OVER PER MIL-C-5541. PAINT ALL EXTERNAL SURFACES EXCEPT ALL HOLES AND WHERE NOTED WITH BLUE PAINT PER TT-E-529 COLOR #25109 OF FED-STD-595

LABEL/STENCIL AS SHOWN, PER MIL-STD-130



Ø .136 THRU., 8 PLCS., EQ SPCD., ON A Ø 3.343 B. C., AS SHOWN

TYPE "N" CONNECTOR, FEMALE, 4 PLCS
DO NOT PAINT

PROCEDURE	F.B.M.	F.B.N.H.	NEEDHAM	NATICK	GROUP OR PART	NEXT ASSY	USED ON	NEXT ASSY	FINAL ASSY	QTY REQ'D
TOOLING AVAILABLE AND LOCATION						APPLICATION		QTY REQ'D		

REQ'D	REQ'D	REQ'D	REQ'D	ITEM OR SYN	QTY	PART NUMBER	DESCRIPTION	MATERIAL	NAT'L SPEC
<p>CAUTION: UNLESS THIS DRAWING BEARS THE SIGNATURE OF TWO AUTHORIZED ENGINEERING REPRESENTATIVES IN THE "APPROVED" BLOCKS IT IS PRELIMINARY AND UNDER NO CIRCUMSTANCES IS TO BE USED FOR MANUFACTURING PURPOSES.</p> <p>UNLESS OTHERWISE SPECIFIED DIMENSIONS ARE IN INCHES TOLERANCES ARE: .XX ± .02 .XXXX ± .0005 .XXX ± .005 ANGULAR ± 30' FINISH MATHCHAR #55</p> <p>COMMERCIAL PUBLISHED TOLERANCES SHALL APPLY TO TUBING, BAR, PLATE, ETC. ALL THREADS TO BE CLASS 2A (EXTERNAL), OR 2B (INTERNAL). PLATED PARTS MUST FIT GAGES AND MEET SPECIFIED TOLERANCES AFTER PLATING.</p>									
DRAWN BY		DATE		<p>LIST OF MATERIAL</p> <p>MDL INC MICROWAVE DEVELOPMENT LABORATORIES NATICK, MASSACHUSETTS</p> <p>OUTLINE TYPE "N" DUAL CH COAX RJ MDL MODEL 120 RKD 16</p>					
R. J. FOGLIO		06-26-98							
CHECKED BY		DATE							
W. BARTLEY		06-26-98							
ELECTRICAL ENGR		DATE							
W. BARTLEY		06-26-98							
MECHANICAL ENGR		DATE							
R. J. FOGLIO		06-26-98							
DESIGN ACTIVITY APPROVAL				DIB		CODE IDENT. NO.		REV	
				C		01456		B	
OTHER ACTIVITY APPROVAL				SCALE		WEIGHT		SHEET 1 OF 1	
				1/1					