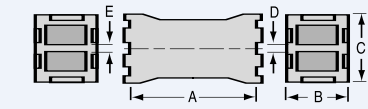
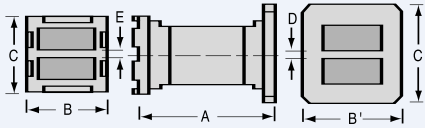


Topwall Couplers – 3dB

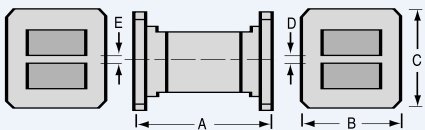
TOPWALL COUPLERS – 3dB



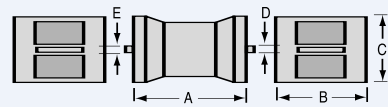
STYLE 7A



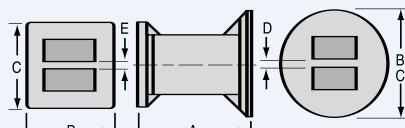
STYLE 7B



STYLE 7C



STYLE 7E



STYLE 7F

W/G Size	Electrical Data					Mechanical Data (inches)				
	Frequency GHz	Style	Model Number	Output Power Unbalance (dB)	Isolation (dB min)	A	B	C	D	E
WR51	15.0-17.5	7A	51HT22	±.25	30	.975	.66	.70	.040	.040
	17.1-20.0	7A	51HT12	±.25	30	1.125	.67	.72	.040	.040
WR62	13.3-15.6	7A	62HT82	±.25	30	1.250	.78	.88	.090	.090
	15.0-17.0	7A	62HT22	±.25	30	1.110	.78	.88	.090	.090
	15.0-17.5	7A	62HT72	±.25	30	1.110	.78	.88	.090	.090
	15.5-17.5	7A	62HT52	±.25	30	1.110	.78	.88	.090	.090
	16.0-17.0	7A	62HT32	±.25	35	1.110	.78	.88	.090	.090
WR90	8.5-9.6	7A	90HT22	±.25	30	1.735	1.13	1.14	.120	.120
	9.0-9.2	7A	90HT112	±.40	25	1.735	1.14	1.16	.120	.120
	9.2-11.0	7A	90HT112	±.40	28	1.735	1.14	1.16	.120	.120
	9.4-10.8	7A	90HT92	±.25	30	1.735	1.14	1.16	.120	.120
WR112	7.5-7.7	7A	112HT12	±.45	25	2.000	1.34	1.38	.150	.150
	7.7-9.6	7A	112HT12	±.45	28	2.000	1.34	1.38	.150	.150
	7.9-9.3	7A	112HT22	±.25	30	2.000	1.34	1.38	.150	.150
WR137	5.2-6.0	7A	137HT82	±.25	30	2.625	1.63	1.64	.150	.150
	5.2-6.7	7E	137HT42	±.60	28	2.750	2.13	1.53	.150	.150
	5.4-5.9	7A	137HT72	±.15	35	2.625	1.63	1.64	.150	.150
	6.7-8.2	7E	137HT52	±.45	26	2.750	2.13	1.53	.150	.150
WR187	4.0-5.2	7E	187HT32	±.60	28	3.750	2.59	2.09	.150	.150
	4.3-5.0	7A	187HT62	±.25	30	3.535	2.61	2.12	.150	.150
	5.0-5.6	7A	187HT22	±.25	30	3.625	2.14	2.16	.150	.150
	5.1-5.9	7A	187HT42	±.25	30	3.625	2.13	2.14	.150	.150
	5.1-5.9	7A	187HT22	±.25	30	3.625	2.13	2.14	.150	.150
WR229	3.7-4.2	7A	229HT12	±.25	30	4.250	2.57	2.69	.128	.128
WR284	2.5-3.0	7F	284HT64	±.25	30	4.660	4.09B 5.00B'	4.09C 5.00C'	.160	.160
	2.7-2.9	7A	284HT12	±.25	30	4.750	3.19	3.19	.160	.160
	2.7-2.9	7B ¹	284HT34	±.25	30	4.750	3.19B 4.70B'	3.19C 4.70C'	.160	.160
	2.7-2.9	7C ¹	284HT44	±.25	30	4.750	4.70	4.70	.160	.160
	2.75-3.25	7A	284HT22	±.25	30	4.750	3.19	3.19	.160	.160
	2.7-3.3	7A	284HT22	±.35	28	4.750	3.19	3.19	.160	.160
	2.7-3.25	7B ¹	284HT14	±.25	30	4.750	3.19B	3.19C	.160	.160
	2.7-3.3	7B ¹	284HT14	±.35	28	4.750	4.70B'	4.70C'	.160	.160
	2.75-3.25	7C ¹	284HT24	±.25	30	4.750	4.70	4.70	.160	.160
	2.7-3.3	7C ¹	284HT24	±.35	28	4.750	4.70	4.70	.160	.160
	2.7-3.7	7B ¹	284HT54	±1.0	20	5.500	3.19B 4.70B'	3.19C 4.70C'	.160	.160
	3.0-3.5	7A	284HT42	±.25	30	4.750	3.19	3.19	.160	.160

Notes: ¹ 284FT12 flange
Socket dimensions & overall tolerances shown on Page 44.