

# Waveguide to Coax Adapters

## SMA Low VSWR Adapters

Maximum VSWR of 1.065:1 with pressure VSWR 1.1 maximum. MDL uses the swept frequency sliding load techniques to test all models. All low VSWR adapters are measured feeding the waveguide port and terminating the coaxial port with a precision sliding load with a beadless connector.

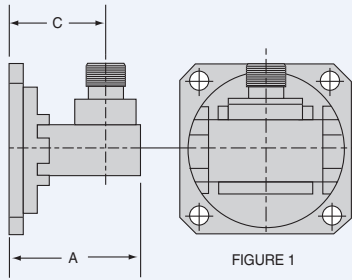


FIGURE 1  
Female

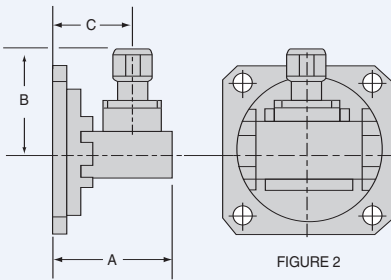


FIGURE 2  
Male

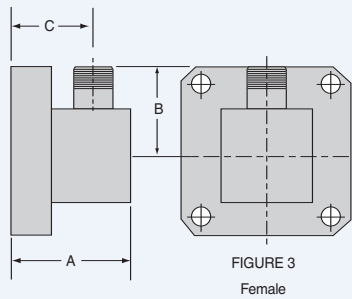


FIGURE 3  
Female

FREQ. RANGE GC/SEC.	MDL MODEL NUMBER	FIG.	DIMENSIONS		
			"A" MAX.	"B" MAX.	"C" ± .020
12.40-18.00	62AC126*	1	1.08	0.73	0.81
	62AC136*	2	1.08	0.85	0.81
10.00-15.00	75AC126*	1	1.20	0.77	0.82
	75AC136*	2	1.20	0.89	0.82
8.20-12.40	90AC126*	1	1.15	0.78	0.82
	90AC136*	2	1.15	0.91	0.82
7.00-11.00	102AC126*	1	1.40	0.85	0.95
	102AC136*	2	1.40	0.97	0.95
7.05-10.00	112AC126*	1	1.40	0.85	0.93
	112AC136*	2	1.40	0.97	0.93
5.85-8.20	137AC126* <sup>+</sup>	1	1.52	0.91	1.02
	137AC136* <sup>+</sup>	2	1.52	1.03	1.02
4.90-7.05	159AC126*	1	1.65	0.99	0.99
	159AC136*	2	1.65	1.12	0.99
3.95-5.85	187AC126* <sup>+</sup>	1	1.77	1.03	0.99
	187AC136* <sup>+</sup>	2	1.77	1.16	0.99
3.30-4.90	229AC126*	1	2.70	1.17	1.41
	229AC136*	2	2.70	1.29	1.41
2.60-3.95	284AC126* <sup>+</sup>	1	2.65	1.36	1.62
	284AC136* <sup>+</sup>	2	2.65	1.49	1.62

**Notes:** <sup>+</sup> Flanges are round, not square as shown.

\* See ordering information page