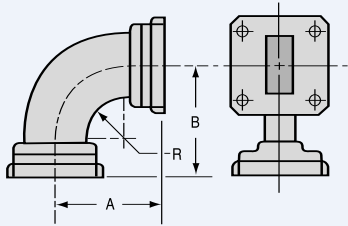
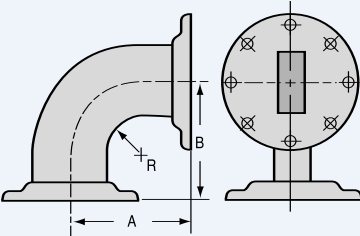


Bends with Flanges

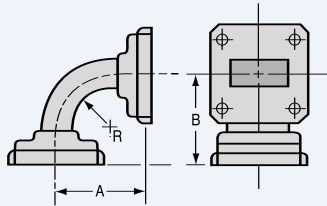
BENDS WITH FLANGES



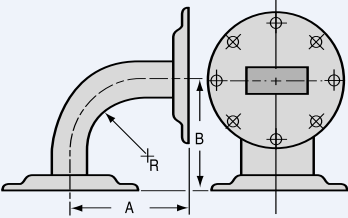
STYLE 1H



STYLE 2H



STYLE 1E



STYLE 2E

W/G Size Freq GHz	Angle	Style	Model Number	Dimensions		
				R	A	B
WR28 26.5 to 40.0 GHz	90°	1E	28BE18	.50	.95	.95
		1H	28BH18	.75	1.27	1.27
WR42 18.0 to 26.5 GHz	90°	1E	42BE18	.75	1.28	1.28
		1H	42BH18	.75	1.41	1.41
WR51 15.0 to 22.0 GHz	90°	1E	51BE18	.57	1.33	1.33
		1H	51BH18	.95	1.69	1.69
WR62 12.4 to 18.0 GHz	90°	1E	62BE18	.68	1.39	1.39
		1H	62BH18	1.00	1.86	1.86
WR75 10.0 to 15.0 GHz	90°	1E	75BE18	.50	1.06	1.06
		1H	75BH18	.87	1.63	1.63
WR90 8.2 to 12.4 GHz	90°	1E	90BE18	.75	1.56	1.56
		1E	90BE28	1.00	1.81	1.81
		1H	90BH18	1.00	2.06	2.06
WR102 7.0 to 11.0 GHz	90°	1E	102BE18	1.00	1.81	1.81
		1H	102BH18	2.00	3.50	3.50
WR112 7.05 to 10.0 GHz	90°	1E	112BE18	.75	1.81	1.81
		1H	112BH18	1.38	2.75	2.75
WR137 5.85 to 8.20 GHz	90°	2E	137BE18	1.00	2.25	2.25
		2H	137BH18	2.00	3.63	3.63
WR187 3.95 to 5.85 GHz	90°	2E	187BE18	4.00	5.56	5.56
		2H	187BH18	4.00	7.06	7.06
WR284 2.60 to 3.95 GHz	90°	2E	284BE18	2.25	4.38	4.38
		2H	284BH18	6.00	9.63	9.63

W/G Size Freq GHz	Angle	Style	Model Number	Dimensions		
				R	A	B
Double Ridge Bends						
WRD-750-D24 7.5 to 18.0 GHz		1E*	D750BE18	1.0	1.60	1.60
		1H*	D750BH18	1.0	1.70	1.70

Notes: Tolerance: $\pm .020$

VSWR: 1.1

All flanges equivalent to MIL F 3922.

* Same configuration as 1E & 1H except double ridge. VSWR 1.1:1. Aluminum only.