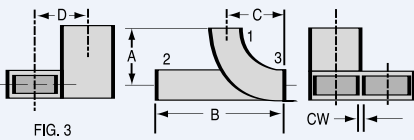
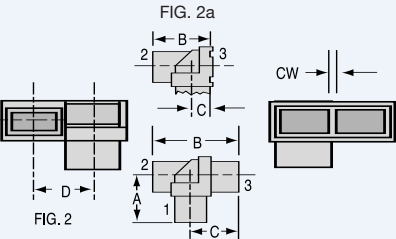
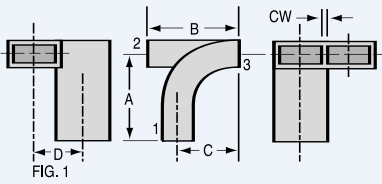
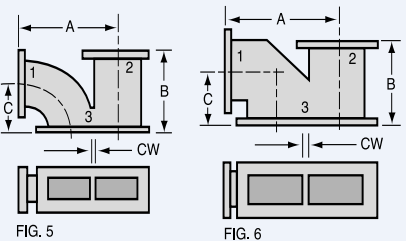
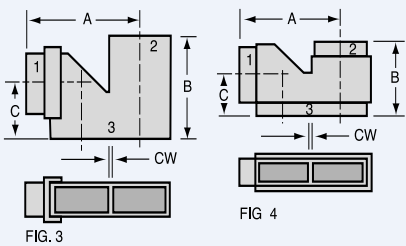
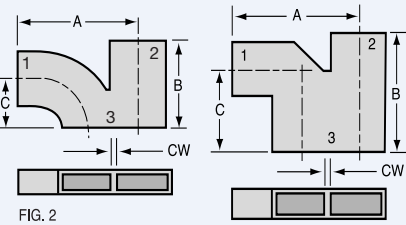


Sidewall Adapters

SIDEWALL E AND STRAIGHT ADAPTERS



SIDEWALL H AND STRAIGHT ADAPTERS



W/G	FIG	C/W	Terminals			MDL Model Number	Dimensions			
			1	2	3		A	B	C	D

Sidewall E and Straight Adapters

WR62	1	.040	W/G	W/G ¹	W/G ¹	62JS42	1.19	1.22	.81	.66
	1	.040	W/G	W/G ¹	62FS52 ²	62JS34	1.19	1.22	.81	.66
	3	.040	W/G ³	W/G	W/G	62JS342	.81	1.56	.62	.66
	1	.090	W/G	W/G ¹	W/G	62JS52	1.19	1.22	.81	.71
	1	.090	W/G	W/G ¹	62FS92 ²	62JS24	1.19	1.22	.81	.71
	2	.090	W/G	W/G	W/G	62JS212	.59	1.08	.59	.71
	2a	.090	W/G	W/G	Corral	62JS282	.59	.74	.25	.71
WR112	3	.090	W/G ³	W/G	W/G	62JS292	.81	1.56	.62	.71
	1	.064	W/G ⁴	112FA42 ²	W/G	112JS14	.94	1.20	.50	1.19

- Notes:**
- Terminal #2 will not accept cover flange because of E bend configuration. Add 0.25 to B dimension if choke flange is used.
 - Integrally cast flange: See flange specification table, page 46.
 - Terminal #1 will accept only UG type choke or butt type cover flanges. Add 0.25 to A dimension.
 - Terminal #1 will not accept any flange because of the integrally cast flange on terminal #2.

W/G	FIG	C/W	Terminals			MDL Model Number	Dimensions		
			1	2	3		A	B	C

Sidewall H and Straight Adapters

WR28	1	.040	W/G	W/G	W/G	28JS32	1.48	1.14	.61
WR42	2	.040	W/G	W/G	W/G	42JS82	1.08	.80	.44
	2	.090	W/G	W/G	W/G	42JS122	1.13	.80	.44
WR62	2	.040	W/G	W/G	W/G	62JS62	1.33	1.21	.58
	2	.040	Corral	W/G	W/G	62JS72	1.33	1.21	.58
	3	.040	W/G	W/G	W/G	62JS302	1.30	1.20	.64
	3	.040	Corral	W/G	W/G	62JS312	1.03	1.20	.64
	3	.090	W/G	W/G	W/G	62JS322	1.35	1.20	.64
	3	.090	Corral	W/G	W/G	62JS332	1.08	1.20	.64
	2	.090	W/G ¹	W/G	W/G	62JS82	1.38	1.21	.58
WR75	2	.050	W/G	W/G	W/G	75JS22	1.60	1.50	.62
WR90	2	.050	W/G ²	W/G	W/G	90JS42	1.88	1.56	.75
	2	.120	W/G ²	W/G	W/G	90JS52	2.03	1.56	.75
	4	.120	W/G	W/G	W/G	90JS82 [†]	1.78	1.31	.76
WR112	2	.064	W/G ³	W/G	W/G	112JS62	2.62	2.13	1.19
	2	.150	W/G ³	W/G	W/G	112JS72	2.71	2.13	1.19
WR137	2	.074	W/G ⁴	W/G ⁴	W/G	137JS12	3.36	3.06	1.50
	2	.150	W/G ⁴	W/G ⁴	W/G	137JS22	3.44	3.06	1.50
B137	6	.150	B137FA12 ⁵	B137FA12 ⁵	W/G	B137JS14	2.50	1.70	1.26
WR159	5	.150	CMR159 ⁵	CMR159 ⁵	CMRD-159 ⁵	159JS14	3.69	2.93	1.69
WR187	2	.128	W/G ⁶	W/G ⁶	W/G	187JS22	4.71	4.26	2.18

- Notes:**
- If flange is required use UG type choke or butt-type cover. Add 0.25 to A dimension.
 - If UG choke flange is to be used, add 0.31 to A dimension.
 - If UG choke flange is to be used, add 0.44 to A dimension.
 - If flange is required use UG type choke or butt-type cover. Add 0.50 to A or B dimensions.
 - Integrally cast flange: See flange specification table, page 46.
 - If flange is required use UG type choke or butt-type cover. Add .69 to A or B dimensions.
 - † OD of all terminals are machined to accept ID of flanges.

Sidewall Adapters

W/G	FIG	C/W	Terminals			MDL Model Number	Dimensions			
			1	2	3		A	B	C	D
Sidewall Panty Adapters										
WR28	1	.040	W/G	W/G	W/G	28JS22	1.12	1.12	.82	.32
	1	.090	W/G	W/G	W/G	28JS42	1.12	1.12	.87	.37
WR42	2	.040	W/G	W/G	W/G	42JS162	.84	.84	.95	.46
	2	.090	W/G	W/G	W/G	42JS72	.84	.84	1.00	.51
WR62	1	.040	W/G	W/G	W/G	62JS12	1.41	1.41	1.52	.66
	1	.090	W/G	W/G	W/G	62JS22	1.41	1.41	1.57	.71
WR75	1	.050	W/G	W/G	W/G	75JS12	1.25	1.25	1.60	.80
C90 (0.900) x0.150HGT	2	.050	W/G ¹	W/G ¹	W/G	C90JS12†	1.43	1.43	2.23	.95
	2	.070	W/G ¹	W/G ¹	W/G	C90JS22†	1.43	1.43	2.25	.97
	2	.100	W/G ¹	W/G ¹	W/G	C90JS32†	1.43	1.43	2.28	1.00
WR90 0.150HGT	1	.050	W/G ²	W/G ²	W/G	90JS62	1.13	1.13	1.69	.95
	2	.050	W/G ²	W/G ²	W/G	90JS92	1.22	1.22	1.90	.95
	1	.120	W/G ²	W/G ²	W/G	90JS32	1.13	1.13	1.76	1.02
WR112	1	.064	W/G ³	W/G ³	W/G	112JS32	1.28	1.28	1.94	1.19
	1	.150	W/G ³	W/G ³	W/G	112JS42	1.28	1.28	2.03	1.27
WR187	1	.128	W/G ⁴	W/G ⁴	W/G	187JS12	2.69	2.69	3.88	2.00

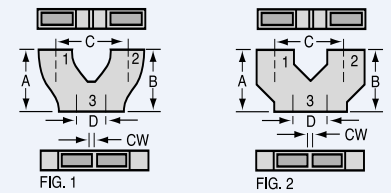
- Notes:** ¹ If flange is required use C90FA12 (see flange specification table on page 46) OD of terminals machined to accept ID of flange.
² If UG choke flange is to be used add 0.31 to A or B dimensions.
³ If flange is required use UG type choke or butt type cover. Add 0.44 to A or B dimensions.
⁴ If flange is required use UG type choke or butt type cover. Add 0.69 to A or B dimensions for choke flanges. 0.38 for cover flange.
† OD of terminals 1 and 2 are machined to accept ID of flanges.

W/G	FIG	C/W	Terminals			MDL Model Number	Dimensions				
			1	2	3		A	B	C	D	
Sidewall Dual H											
WR28	1	.040	W/G	W/G	W/G	28JS12	1.16	.69	2.17	.61	
WR42	2	.040	W/G	W/G	W/G	42JS12	.62	.62	1.70	.44	
	2a	.040	Corral	Corral	W/G	42JS32	.73	.73	1.92	.44	
	2	.090	W/G	W/G	W/G	42JS42	.62	.62	1.75	.44	
	2a	.090	Corral	Corral	W/G	42JS52	.73	.73	1.97	.44	
WR62	2	.040	W/G	W/G	W/G	62JS92	1.29	1.29	3.24	.88	
	2a	.040	Corral	Corral	W/G	62JS112	1.38	1.38	3.42	.88	
	3	.040	W/G	W/G	W/G	62JS232	.75	.75	2.16	.64	
	3a	.040	Corral	Corral	W/G	62JS262	.37	.37	1.40	.64	
	2	.090	W/G	W/G	W/G	62JS122	1.29	1.29	3.29	.88	
	2a	.090	Corral	Corral	W/G	62JS142	1.38	1.38	3.47	.88	
	3	.090	W/G	W/G	W/G	62JS222	.75	.75	2.21	.64	
	3a	.090	Corral	Corral	W/G	62JS272	.37	.37	1.45	.64	
	WR90 .200HGT	7	.050	Corral	Corral	W/G	A90JS32	.575	.575	2.100	.690
		8	.050	W/G	W/G	Corral	A90JS42	.775	.775	2.500	.575
9		.050	Corral	Corral	Corral	A90JS52	.575	.575	2.100	.575	
WR90	1	.050	W/G	W/G	W/G	90JS12	.98	.98	2.91	.79	
	1	.120	W/G	W/G	W/G	90JS22	.98	.98	2.98	.79	
WR112	1	.064	W/G	W/G	W/G	112JS12	1.10	1.10	3.39	.97	
	1	.150	W/G	W/G	W/G	112JS22	1.10	1.10	3.47	.97	

W/G	FIG	C/W	Terminals			MDL Model Number	Dimensions				
			1	2	3		A	B	C	D	E
Sidewall E & H Adapter											
WR90	6	.050	W/G	W/G	Corral	90JS72†	1.84	2.62	.75	.75	.95

- Notes:** ¹ Integrally cast flange: See flange specification table, page 46.
² If flange is required use UG type choke or butt type cover. Add .312 to B dimension.
† OD of terminals 1 and 2 are machined to accept ID of flanges.

SIDEWALL PANTY ADAPTERS



SIDEWALL DUAL H

