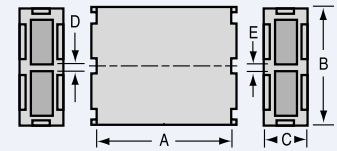


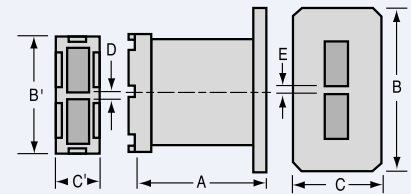
# Sidewall Couplers – Other than 3dB

SIDEWALL COUPLERS – OTHER THAN 3dB

W/G Size	Electrical Data						Mechanical Data (inches)				
	Frequency GHz	Style	Model Number	Coupling Reference (dB)	Output Power Unbalance (dB)	Directivity (dB min)	A	B	C	D	E
<b>WR28</b>	38.0-40.2	1A	28CH12	4.8	-3.0 ±.25	20	.550	.77	.30	.040	.040
<b>WR42</b>	19.5-22.5	1A	42CH12	4.8	-3.0 ±.25	18	.900	1.11	.29	.090	.090
<b>WR62</b>	12.0-14.0	1A	62CH12	4.8	-3.0 ±.25	15	1.110	1.44	.47	.040	.040
	12.6-14.0	1A	62CH102	4.8	-3.0 ±.25	20	1.110	1.44	.47	.040	.040
	12.6-14.4	1A	62CH32	5.6	-4.2 ±.25	20	1.110	1.45	.46	.040	.040
	12.6-14.6	1A	62CH42	5.4	-3.95 ±.25	20	1.110	1.45	.46	.040	.040
	13.0-14.5	1A	62CH52	6.0	-4.8 ±.25	20	1.110	1.45	.46	.040	.040
	13.1-14.3	1A	62CH72	6.2	-5.0 ±.25	20	1.110	1.45	.46	.040	.040
	13.5-15.5	1A	62CH62	4.8	-3.0 ±.25	18	1.250	1.50	.48	.090	.090
	15.0-17.0	1A	62CH22	4.8	-3.0 ±.25	20	1.110	1.44	.47	.040	.040
	15.4-17.4	1B <sup>1</sup>	62CH92	4.8	-3.0 ±.25	22	1.110	1.75B 1.45B'	1.30C .48C'	.040	.040
<b>WR75</b>	10.7-11.7	1A	75CH12	6.0	-4.8 ±.25	24	1.375	1.75	.58	.050	.050
<b>WR90</b>	8.2-9.2	1A	90CH52	7.0	-6.1 ±.25	20	1.735	2.14	.69	.120	.120
	8.5-9.6	1A	90CH12	4.8	-3.0 ±.25	22	1.735	2.13	.63	.120	.120
	8.5-9.6	1A	90CH62	3.5	-1.0 ±.25	25	1.735	2.06	.59	.050	.050
	8.7-9.6	1A	90CH72	5.8	-4.5 ±.25	15	1.735	2.06	.59	.050	.050
	8.8-9.6	1A	90CH82	2.5	+1.0 ±.25	25	1.735	2.06	.66	.050	.050
	8.8-9.8	1A	90CH92	5.5	-4.0 ±.25	15	1.735	2.06	.59	.050	.050
	9.1-9.6	1A	90CH102	6.0	-4.9 ±.25	22	1.735	2.06	.59	.050	.050
	9.1-9.65	1A	90CH112	4.0	-1.8 ±.25	20	1.735	2.06	.59	.050	.050
	9.3-11.0	1A	90CH122	5.2	-3.7 ±.25	15	2.000	2.13	.61	.120	.120
	9.5-10.3	1A	90CH132	5.2	-3.7 ±.25	20	2.000	2.13	.61	.120	.120
	9.5-11.0	1A	90CH32	4.8	-3.0 ±.25	20	2.000	2.13	.61	.120	.120
9.7-10.0	1A	90CH142	5.5	-4.0 ±.25	18	1.735	2.06	.59	.050	.050	
<b>WR90</b>	8.5-9.6	1A	A90CH12	-3.2	-.40 ±.40	25	1.735	2.12	.40	.120	.120
<b>200 HGT</b>	8.5-9.6	1A	A90CH22	-3.5	-1.00 ±.25	25	1.735	2.12	.40	.120	.120
	8.5-9.6	1A	A90CH32	-3.75	-1.40 ±.25	23	1.735	2.12	.40	.120	.120
	8.5-9.6	1A	A90CH42	-4.0	-1.80 ±.25	20	1.735	2.12	.40	.120	.120
	8.5-9.6	1A	A90CH52	-4.8	-3.00 ±.25	20	1.735	2.12	.40	.120	.120
	8.5-9.6	1A	A90CH62	-5.4	-3.90 ±.25	15	1.735	2.12	.40	.120	.120
	9.3-10.3	1A	A90CH72	-5.2	-3.64 ±.25	24	1.735	2.12	.42	.120	.120
	9.3-10.3	1A	A90CH82	6.96	-5.98 ±.25	20	1.735	2.12	.47	.120	.120
	9.3-10.3	1A	A90CH92	7.65	-6.83 ±.25	14	1.735	2.12	.49	.120	.120
<b>WR112</b>	7.25-7.75	1A	112CH32	4.8	-3.0 ±.25	20	2.187	2.64	.73	.150	.150
	7.25-8.75	1A	112CH12	4.8	-3.0 ±.25	20	2.187	2.64	.73	.150	.150
	8.5-9.6	1A	112CH22	4.8	-3.0 ±.25	20	2.000	2.53	.73	.064	.064
<b>WR137</b>	5.3-6.3	1A	137CH12	4.8	-3.0 ±.30	20	2.750	3.15	.88	.150	.150
	5.5-6.2	1A	137CH22	5.0	-3.3 ±.30	22	2.750	3.15	.88	.150	.150



STYLE 1A



STYLE 1B

Notes: <sup>1</sup> Similar to 430FA12 flanges