

# Waveguide to Coax Adapters

## SMA Standard Adapters

Microwave Development Laboratories' miniature waveguide to coaxial adapters cover frequency ranges 2.6-40.0 GHz. VSWR 1.25 MAX with some typically 1.14 VSWR.

## Double Ridge Adapter

VSWR 1.3 MAX

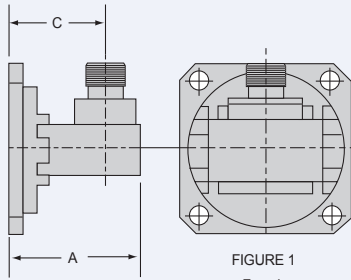


FIGURE 1  
Female

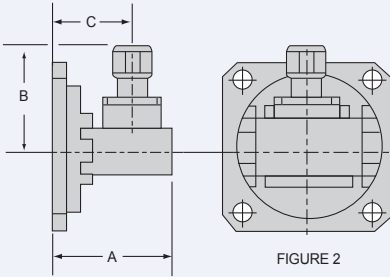


FIGURE 2  
Male

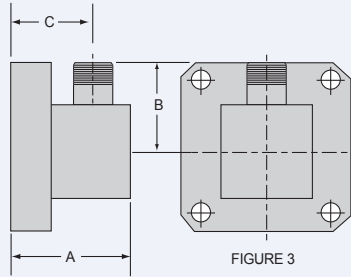


FIGURE 3  
Female

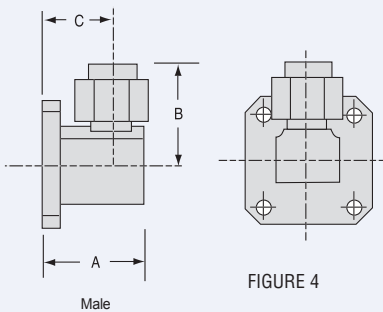


FIGURE 4  
Male

FREQ. RANGE GC/SEC.	MDL MODEL NUMBER	FIG.	VSWR MAX.	DIMENSIONS		
				"A" MAX.	"B" MAX.	"C" + .020
33.0-50.0	22AC206	3	1.35	0.82	0.50	0.66 <sup>3</sup>
26.50-40.00	28AC206	3	1.30	0.52	0.52	0.35 <sup>1</sup>
	28AC216	4	1.35	0.52	0.63	0.35 <sup>1</sup>
	28AC226	3	1.35	0.52	0.63	0.35 <sup>3</sup>
22.00-33.00	34AC206	3	1.25	0.62	0.54	0.40 <sup>1</sup>
	34AC216	4	1.25	0.62	0.63	0.40 <sup>1</sup>
	34AC226	3	1.25	0.62	0.54	0.40 <sup>3</sup>
18.00-26.50	42AC206	3	1.25	0.62	0.54	0.40
	42AC216	3	1.15	0.62	0.54	0.40 <sup>1</sup>
	42AC226	3	1.15	0.62	0.57	0.40
	42AC236	4	1.25	0.62	0.65	0.40 <sup>1</sup>
15.00-22.00	51AC206	3		0.67	0.59	0.43
12.40-18.00	62AC86	1		1.08	0.73	0.81
	62AC96	2		1.08	0.85	0.81
	62AC206	3		0.79	0.62	0.50
	75AC86	1		1.20	0.77	0.82
	75AC96	2		1.20	0.89	0.55
10.00-15.00	75AC206	3		0.90	0.68	0.55
	75AC216	3	1.15	0.90	0.68	0.55
8.20-12.40	90AC86	1		1.15	0.68	0.82
	90AC96	2		1.15	0.91	0.82
	90AC206	3		1.02	0.69	0.62
7.00-11.00	102AC86	1		1.40	0.85	0.95
	102AC96	2		1.40	0.97	0.95
7.05-10.00	112AC86	1		1.40	0.85	0.93
	112AC96	2		1.40	0.97	0.93
5.85-8.20	137AC86+	1		1.52	0.91	0.93
	137AC96+	2		1.52	1.03	0.93
4.90-7.05	159AC86	1		1.65	0.99	0.99
	159AC96	2		1.65	1.12	0.99
3.95-5.85	187AC86+	1		1.77	1.03	0.99
	187AC96+	2		1.77	1.16	0.99
3.30-4.90	229AC86	1		2.70	1.17	1.41
	229AC96+	2		2.70	1.29	1.41
2.60-3.95	284AC86	4		2.65	1.49	1.62
	284AC96+	2		2.65	1.36	1.62

## Double Ridged Adapter

7.50-18.0	750AC86	1		1.08	0.73	0.81
-----------	---------	---	--	------	------	------

**Notes:**

- 1 2.9 mm connector
- 2 3.5 mm connector
- 3 2.4 mm connector
- + Flanges are round, not square as shown.