

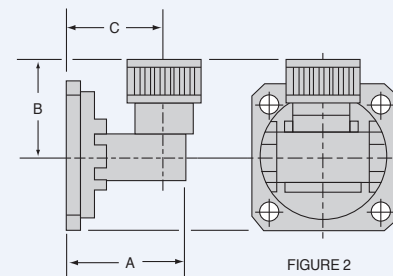
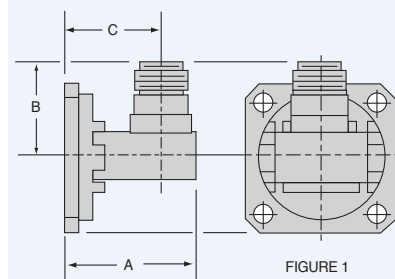
# Waveguide to Coax Adapters

## Type N Low VSWR Adapters

VSWR of 1.065:1, with pressure VSWR 1.1 maximum. MDL uses the swept frequency sliding load technique to test all models. All low VSWR adapters are measures feeding the waveguide port and terminating the coaxial port with a precision sliding load with beadless connector.

FREQ. RANGE GC/SEC.	MDL MODEL NUMBER	FIG.	DIMENSIONS		
			"A" MAX.	"B" MAX.	"C" ± .020
10.00-15.00	75AC106*	1	1.20	1.00	0.87
	75AC116*	2	1.20	1.09	0.87
8.20-12.40	90AC106*	1	1.15	1.02	0.88
	90AC116*	2	1.15	1.11	0.88
7.00-11.00	102AC106*	1	1.40	1.08	1.06
	102AC116*	2	1.40	1.17	1.06
7.05-10.00	112AC106*	1	1.40	1.07	1.06
	112AC116*	2	1.40	1.16	1.06
5.85-8.20	137AC106**	1	1.72	1.40	1.31
	137AC116**	2	1.72	1.49	1.31
4.90-7.05	159AC106*	1	1.90	1.60	1.40
	159AC116*	2	1.90	2.01	1.40
3.95-5.85	187AC106**	1	1.97	1.96	1.45
	187AC116**	2	1.97	2.05	1.45
3.30-4.90	229AC106*	1	2.70	2.15	1.88
	229AC116*	2	2.70	2.30	1.88
2.60-3.95	284AC106**	1	2.72	2.19	1.87
	284AC116**	2	2.72	2.28	1.87

**Notes:** + Flanges are round, not square as shown.  
\* See ordering information page



FREQ. RANGE GC/SEC.	MDL MODEL NUMBER	VSWR MAX.	"A" MAX.	CONNECTORS		
				MALE	FEMALE	DWG

## End Launch Adapters

26.5-40.0	28AEL66	1.35	1.00	-	2.4mm	
26.5-40.0	28AEL86	1.35	1.00	-	2.9mm	
22.0-33.0	34AEL66	1.35	1.00	-	2.4mm	
22.0-33.0	34AEL86	1.35	1.00	-	2.9mm	
15.0-22.0	51AEL86	1.25	1.50	-	SMA	
12.4-18.0	62AEL86	1.25	1.50	-	SMA	
12.4-18.0	62AEL106	1.35	1.75	-	TNC	
10.0-15.0	75AEL46	1.25	1.75	-	N	
10.0-15.0	75AEL86	1.25	1.50	-	SMA	
5.85-8.20	137AEL46	1.25	2.50	-	N	
	159AEL46					
3.30-4.90	229AEL46	1.25	3.80	-	N	